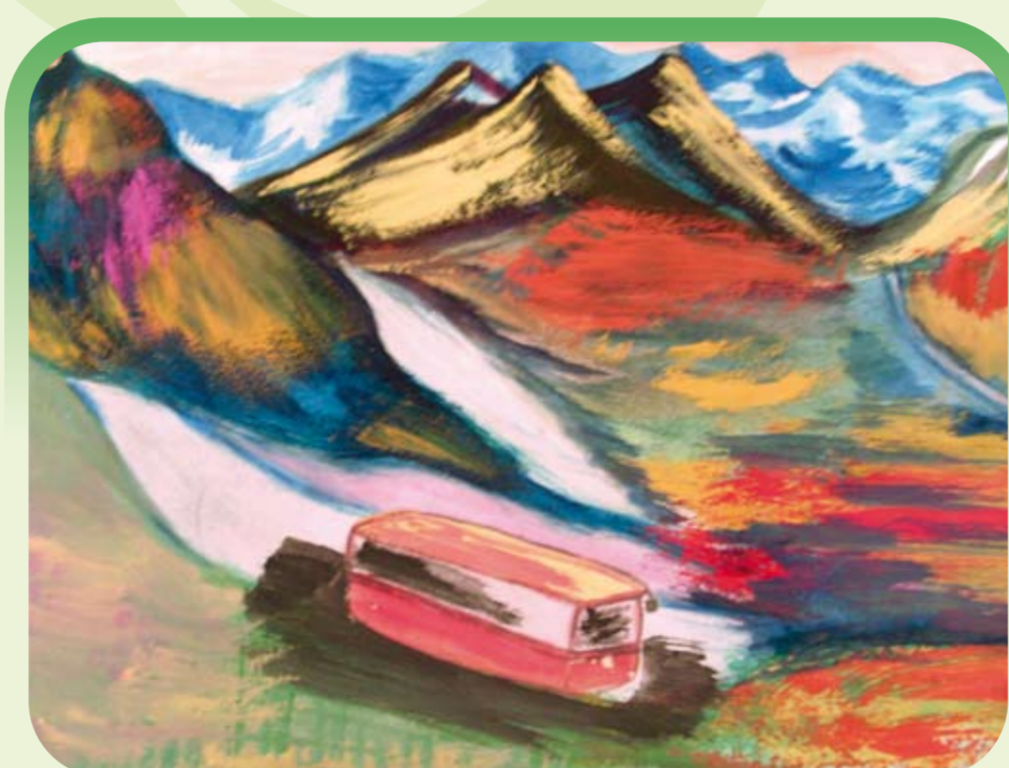
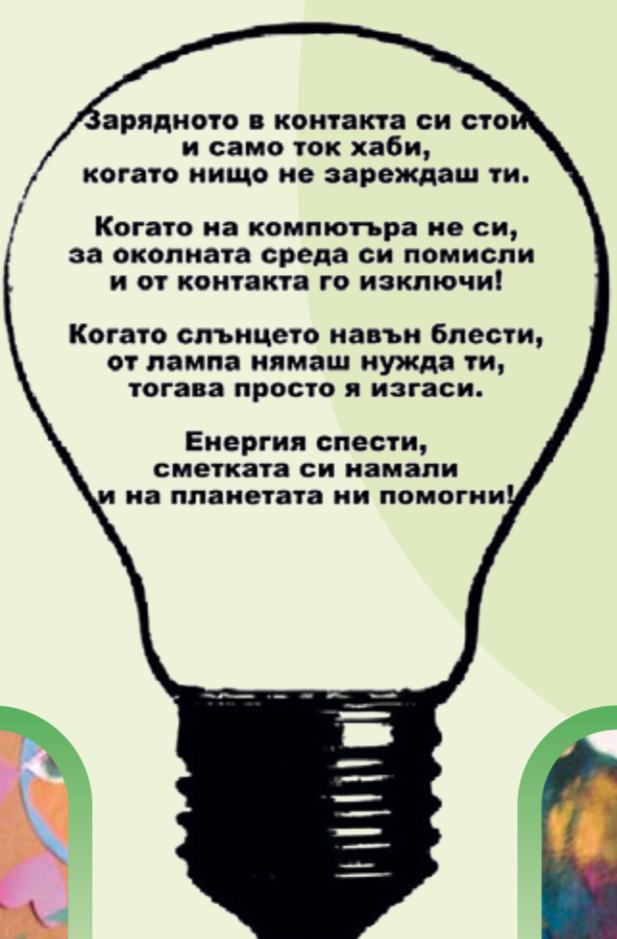


Pictures from practical training



Pictures from exhibition of paintings on the theme: "Transportation and Environmental Protection"



The greatest economical effect was achieved with the changes of the school building.

The window woodwork was replaced by PVC plastics. The building's facade has been heat isolated. The school heating distribution station has been replaced by a new one in order to increase the efficiency of the heating system. The heating station has been provided with thermostatic valves and timers, which automatically switches off the heating when the outside temperature is increased in. 300 luminescent lamps were replaced by new ones to improve the classrooms' illumination and to reduce energy consumption in the classrooms. The school entrance doors were replaced by new ones and were equipped with automats, which prevent cold air from entering. The computer laboratories were provided with circuit-breakers to stop the energy supply of the rooms.

The sole responsibility for the content of this poster lies with the authors. It does not necessarily reflect the opinion of the European Communities. The European Commission is not responsible for any use that may be made of the information contained therein.

